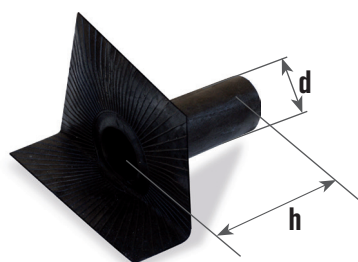
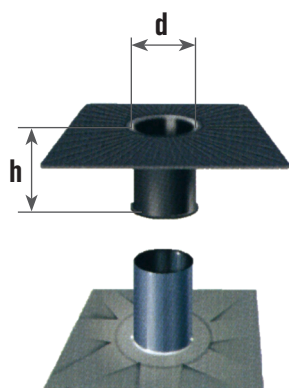
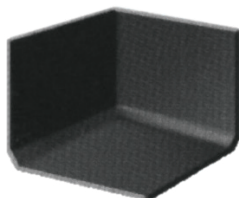
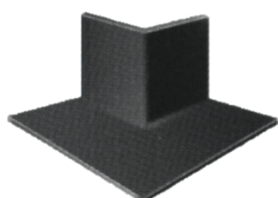


DRAIN OUTLETS & CORNERS PRE-FORMED IN BITUMEN

Drain Outlets



Corners



Cant bit



Description

The pre-formed polymer bitumen drain outlets are manufactured to be reliable and economical but above all 100% compatible with the torch-on membranes.

Advantages

These products are 100% compatible with the polymer bitumen waterproofing membrane and therefore do not require complicated application procedures. They are adaptable, easy to torch in different situations which arise on roofs, like corners, horizontal drains, etc.

They are easy and economical to apply and simply require the same tools as those used for the polymer bitumen membranes, well known by all applicators.

They are also easy to repair as they are made of polymer bitumen membrane reinforced with polyester.

Fully compatible with the torch-on membranes, they become one with the waterproofing system.

These exclusive accessory items from TECA are covered by European patent.

Technical data

| | d [mm] | h [mm] | Pcs x Box |
|-----------------------------|--------|---------|-----------|
| Drain Outlet 60 | 60 | 230 | 12 |
| Drain Outlet 80 | 80 | 230 | 12 |
| Drain Outlet 100 | 100 | 270 | 12 |
| Drain Outlet 120 | 120 | 230 | 12 |
| Drain Outlet 140 | 140 | 230 | 12 |
| Horizontal Drain Outlet 100 | 100 | 250/270 | 12 |

| | Dimensions [mm] | Pcs x Box |
|-----------------|-----------------------|-----------|
| Internal corner | 150 x 150 x 150 | 20 |
| External corner | 340 x 340 / 170 x 170 | 20 |

| | Dimensions [mm] | Pcs x Box |
|--------------------------------------|---------------------|-----------|
| Angle fillet Cant Bit film PE finish | 50 x 40 x 65 x 1100 | 30 |

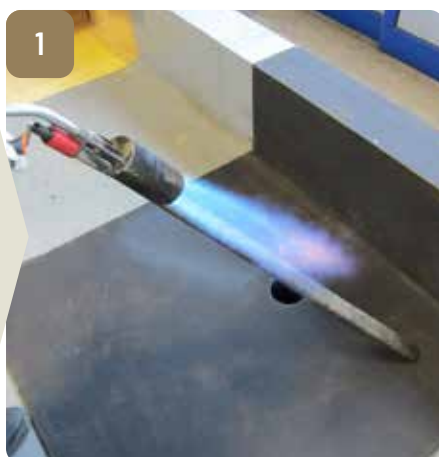
We reserve the rights to change or modify the nominal values without prior notice or advice. The information contained in this data sheet are based on our experience. We cannot take any responsibility for a possible incorrect use of the products. The customer has to choose under their own responsibility a product fit for the intended use.

BOCCHETTONI ED ANGOLI BITUMINOSI PREFORMATI BITUMINOUS PRE-FORMED DRAIN OUTLETS & CORNERS

METODO DI APPLICAZIONE METHOD OF APPLICATION

Sostenere e sfiammare il Cant Bit.
Hold and heat torch the Cant Bit profile.

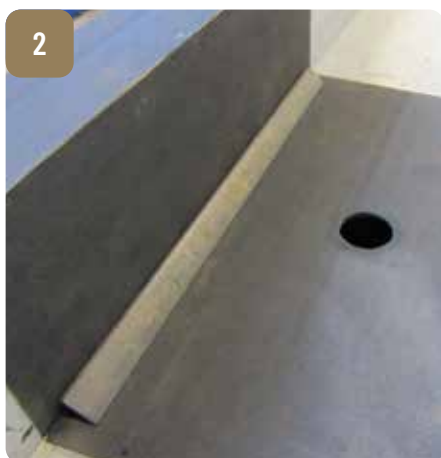
FIG. 1



Posizionare e premere il Cant Bit nell'angolo parete-pavimento.
Place and press the Cant Bit at the base of all upstands.

FIG. 2

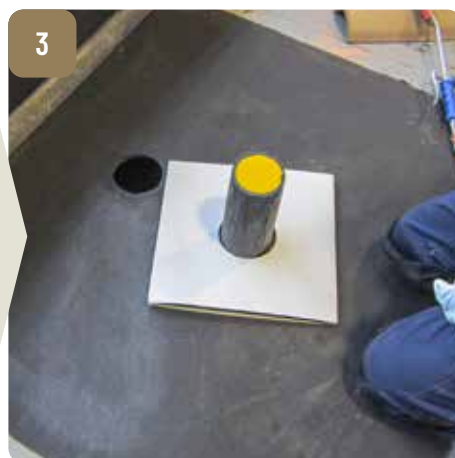
2



Togliere la confezione in cartoncino e l'anima in polistirolo dal bocchettone.
Remove the cardboard package and the polystyrene core from the drain outlet.

FIG. 3-4-5

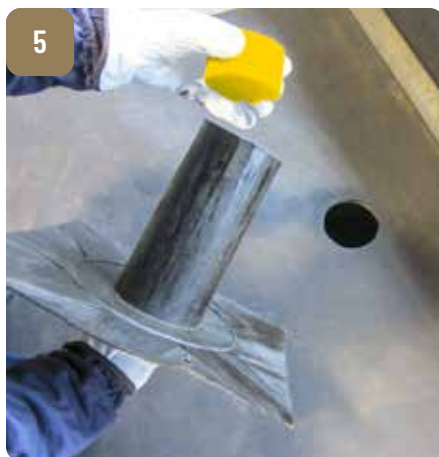
3



4



5



Preparare un pezzo di membrana della misura 50 x 50 cm. (almeno 8/10 cm. più larga della flangia del bocchettone). Ritagliare con cutter il foro per lo scarico.
Prepare a piece of membrane measuring 50 x 50 cm. (at least 8/10 cm wider than the flange of the drain outlet). Cut the drain hole with a cutter.

Prepare a piece of membrane measuring 50 x 50 cm. (at least 8/10 cm wider than the flange of the drain outlet). Cut the drain hole with a cutter.

FIG. 6-7

6



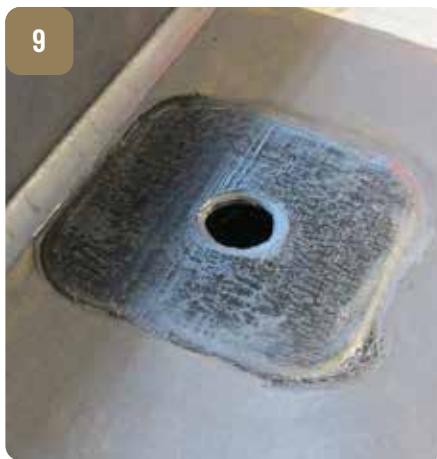
7



Applicare il pezzo di membrana sopra la superficie con foro di scarico, sfiammando la parte inferiore e far fuoriuscire un cordolo di miscela fusa dal perimetro della membrana.
Apply by heat torch the piece of membrane over the surface with the drain hole, torch the lower part until the compound forms a liquid mass from the perimeter of the membrane.

Apply by heat torch the piece of membrane over the surface with the drain hole, torch the lower part until the compound forms a liquid mass from the perimeter of the membrane.

FIG. 8-9



Sfiammare la faccia superiore del pezzo di membrana e riscaldare anche la flangia inferiore del bocchettone.

Heat torch the upper face of the membrane piece and the lower flange of the drain outlet.

FIG. 10-11



Inserire il bocchettone nel foro di scarico e completare la posa a fiamma.

Insert the drain outlet in the hole and complete the application with torch.

FIG. 12-13



Posizionare a secco la porzione di membrana bituminosa da utilizzare avendo cura di sovrapporla al Cant Bit per circa 7/8 cm.

Place the bituminous membrane to be used, making sure to overlap it on the Cant Bit for about 7/8 cm.

FIG. 14



Riavvolgere la porzione di membrana per metà della sua larghezza ed iniziare la posa con bruciatore a caldo. Aiutandosi con un cazzolino completare la posa a fiamma sul Cant Bit. Saldare la parte rimanente a fiamma.

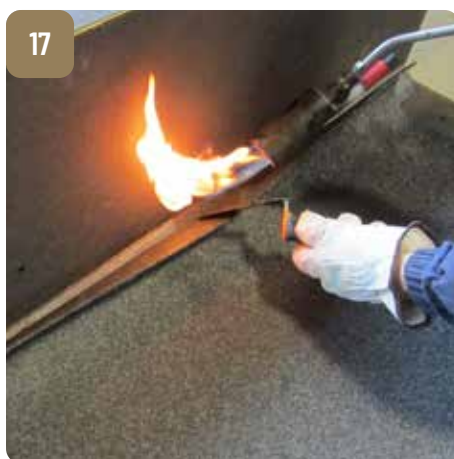
Rewind the membrane portion to half its width and start applying with a torch. Use a trowel to complete the installation on the Cant Bit. Weld the remaining part by torch.

FIG. 15-16-17-18



BOCCHETTONI ED ANGOLI BITUMINOSI PREFORMATI DRAIN OUTLETS & CORNERS PRE-FORMED IN BITUMEN

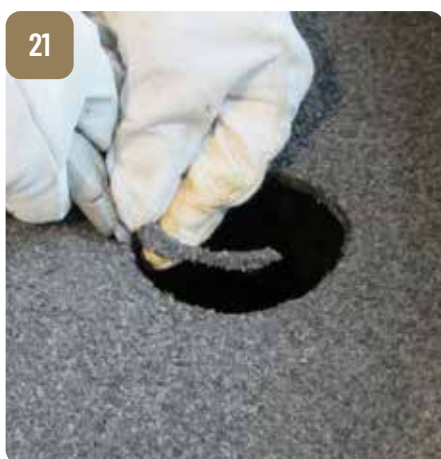
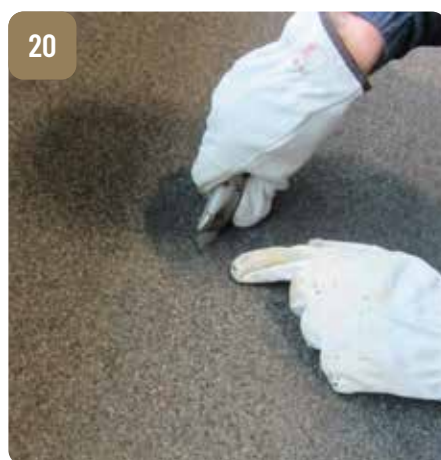
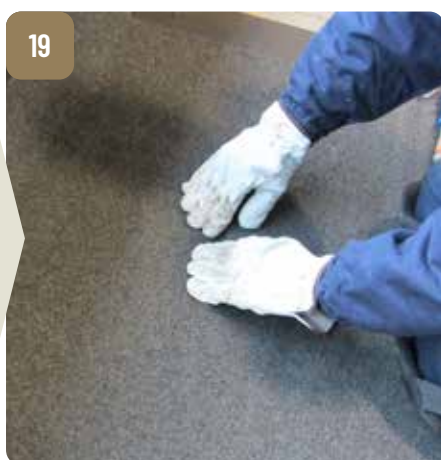
METODO DI APPLICAZIONE METHOD OF APPLICATION



Trovare il punto dello scarico e facendo molta attenzione ritagliare la membrana ed aprire lo scarico.

Find the outlet hole and very carefully cut out the membrane and open the drain.

FIG. 19-20-21



Scaldare leggermente l'apertura dello scarico con la fiamma e successivamente, con cannello caldo ma spento, rifinire i bordi interni dello scarico.

Lightly torch the internal hole outlet area, then with the hot torch bell (extinguished) iron the internal edges to perform the sealing.

FIG. 22-23-24

